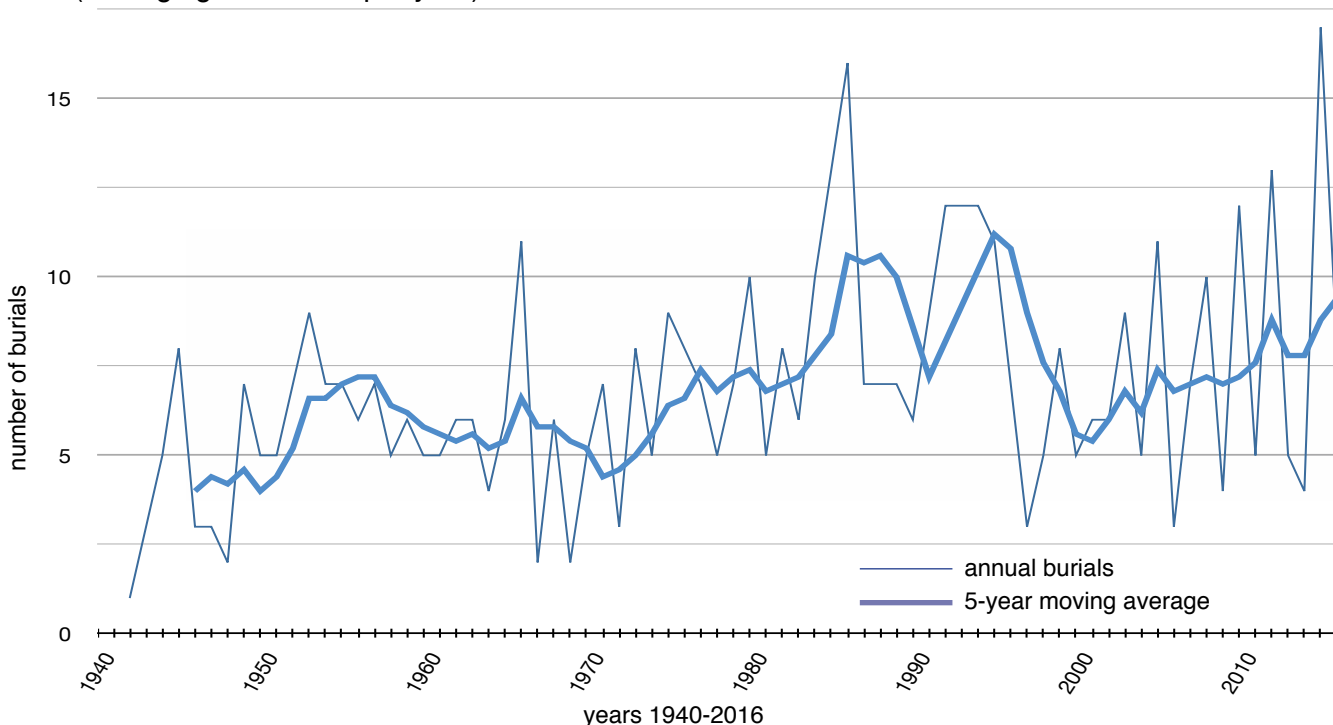


REPORT ON THE PRESENT STATUS OF THE CEMETERIES AT HAWKESBURY - January 2017

The new cemetery at Hawkesbury, opened in 1942, was originally laid out as 10 rows of 40 grave spaces; this was later revised to accommodate two pathways with a section reserved for ashes burials, and currently contains 382 full-size grave plots, and 40 ashes spaces.

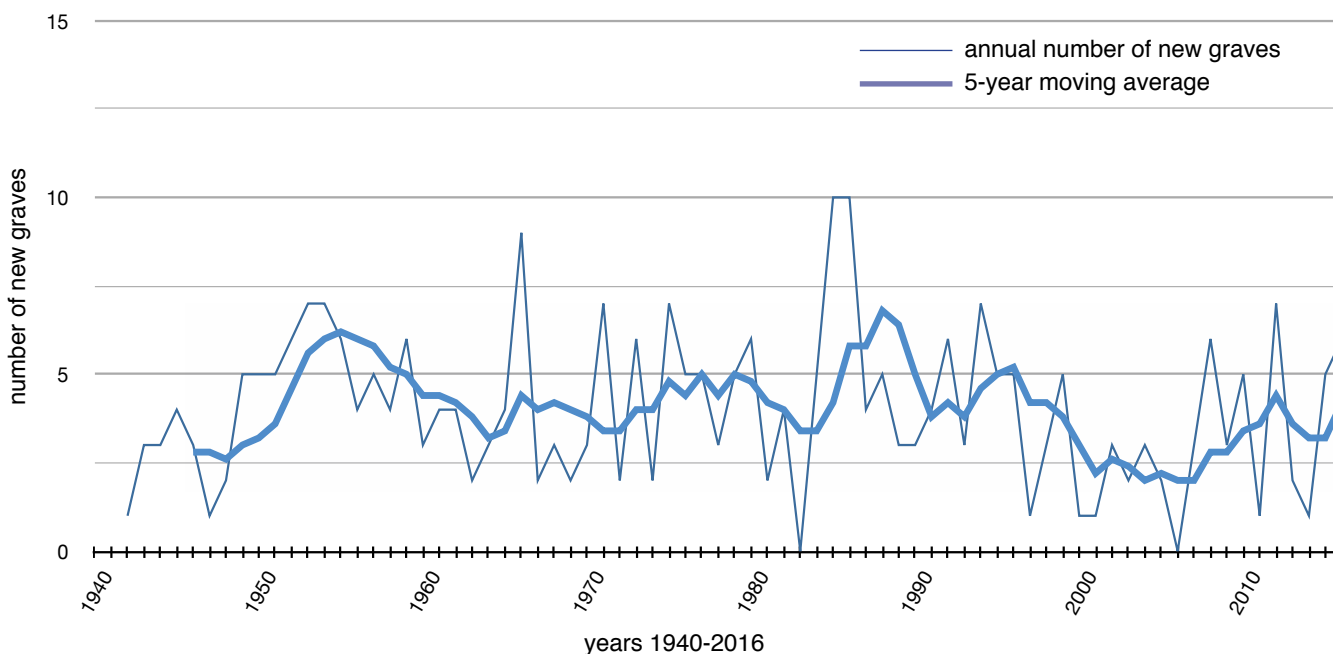
The graph below shows annual numbers of burials in the new cemetery, totalling 508 over the period 1942-2016 (averaging 6.9 burials per year).



The total number of 508 burials that have taken place to date includes ashes interments and repeated use of grave plots, summarised as follows:

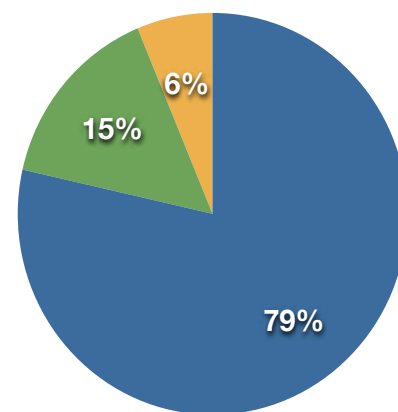
New coffin plots	300
Re-used coffin plots	174
Ashes burials	34

The graph below shows yearly numbers of new grave burials in the new cemetery (excluding ashes interments).



The annual average of new coffin burials in the new cemetery is 4.05. At the beginning of 2017, grave space in the new section has reached 79% of full capacity, with 15% of remaining spaces being reserved, and 6% still vacant.

Occupied grave plots
 Reserved grave plots
 Vacant grave plots



At the time of writing, it is understood that reservation of grave spaces has been suspended; this is not uncommon for cemeteries where space is limited, and in other cases the period of reservation can be limited to 7 or 10 years upon payment of a fee, renewable thereafter. These limitations are very useful in planning use of cemetery spaces.

The time taken until full capacity in the cemetery is reached will depend upon a number of factors, these are mostly unpredictable with any accuracy, but reference to past records gives some helpful indications.

The last 25 years' records of burials in the cemetery demonstrate new and repeat use of grave and ashes spaces. The table right shows the various categories of interments as follows:

- NC New coffin plots
- RC Coffin burials in existing coffin plots
- NA New ashes plots
- RA Ashes burials in existing ashes plots
- AC Ashes burials in existing coffin plots

The average number of new grave spaces (coffin burials) over the past 25 years at 3.64 per year is lower than the total cemetery average of 4.05, partly explained by the progressive introduction of ashes plots during that period.

The total of reserved and vacant grave plots at present is 82, which, using the current overall (1942-2016) average of 4.05 new coffin burials per year, would allow 20 years before full capacity is projected in 2037, if all reserved plots are occupied (for present purposes, ashes burials are not taken into account, since space requirements can be easily accommodated).

Whether or not all reserved grave plots would be occupied during the 20-year period is uncertain, but if the 40 spaces available in the children's section of the old cemetery were added, the projection would increase by a further 10 years to 2047 - almost certainly sufficient time to see all current reservations allocated.

year	NC	RC	NA	RA	AC	total
1992	6	5	1	0	0	12
1993	3	6	3	0	0	12
1994	6	4	1	0	0	11
1995	5	4	1	1	0	11
1996	6	1	0	0	0	7
1997	1	2	3	0	0	6
1998	3	2	0	0	0	5
1999	5	3	0	1	0	9
2000	2	5	0	0	0	7
2001	2	2	0	0	1	5
2002	3	1	1	0	2	7
2003	2	0	4	0	3	9
2004	3	2	0	0	0	5
2005	2	5	4	0	0	11
2006	0	1	1	0	1	3
2007	3	5	0	0	0	8
2008	6	5	0	0	0	11
2009	3	2	0	0	0	5
2010	5	5	1	1	0	12
2011	1	2	1	0	1	5
2012	7	3	2	0	1	13
2013	3	0	0	1	1	5
2014	1	3	0	0	0	4
2015	7	4	2	2	2	17
2016	6	2	0	0	1	9
total	91	74	25	6	13	209
%	43.5%	35.4%	12.0%	2.9%	6.2%	
ave	3.64	2.96	1.00	0.2	0.5	8.4

By the year 2047 (if projections are correct), both the old and new cemeteries will be completely full, and by that time decisions will need to have been made whether to:

- a. acquire more land to extend the cemeteries and thus create more grave spaces
- b. re-use existing (occupied) grave spaces in the original cemetery

Barrie Hope
18th January 2017